

IPTCITM

SOLUTIONS BY SOLVE »

KEEPING YOUR WORLD TURNING



CLAMP-LOK[®]
CONCENTRIC LOCKING COLLAR
MOUNTED UNITS & INSERTS



KEEPING YOUR WORLD TURNING

THE IPTCI ADVANTAGE

Advantage... Our Customer

One definition of “service” simply implies “an advantage.” At IPTCI, advantage-focused service means providing our customers with an edge over their competition. The complete line of IPTCI mounted bearings combines quality, unmatched innovation and affordability to give you the advantage you need.

Call us at 800.328.8153 or visit IPTCI.com to learn more about the IPTCI Advantage.

Table of Contents:

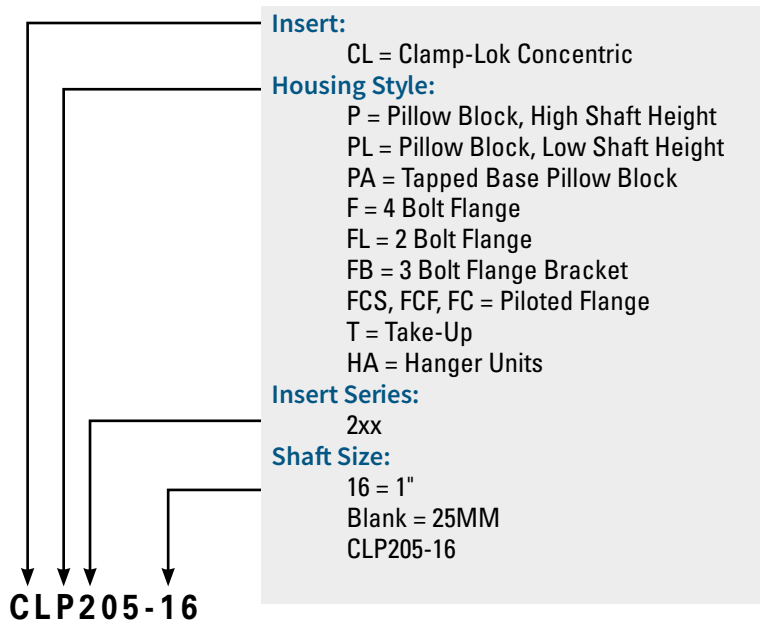
- Product Overview & Interchange 3
- CLP Pillow Blocks 4
- CLPL Pillow Blocks 5
- CLPA Tapped Base Pillow Blocks 6
- CLF 4-Bolt Flange Units 7
- CLFL 2-Bolt Flange Units 8
- CLFB 3-Bolt Flange Units 9
- CLFCS 4-Bolt Piloted Flange Units 10
- CLFCF 4-Bolt Piloted Flange Units 11
- CLFC 4-Bolt Piloted Flange Units 12
- CLT Take Up Units 13
- CL Bearing Inserts 14
- Shaft Tolerances,
Mounting Instructions, Lubrication Tips 15

IPTCI's Clamp-Lok® shaft attachment method allows for a concentric grip by providing 360-degrees of contact on the shaft. Setscrew mounted units cause the shaft to be pushed against one side of the bearing. By gripping the shaft concentrically, the new IPTCI CL Series Clamp-Lok bearings minimize distortion of the inner ring, providing several advantages including:

- Simple installation with a single cap screw
- Improving the roundness of the ball path, resulting in smoother operation and extended bearing life
- Reduced vibration and noise levels
- Improved rotational balance
- Higher operation speeds
- Reduced fretting corrosion/less shaft damage*

*Fretting corrosion occurs when there is relative movement between a bearing and the mating shaft. The small wear particles that are created oxidize when exposed to oxygen in the atmosphere, causing areas of rust to appear on the shaft and the bearing bore. This can cause the bearing to “seize” to the shaft, making bearing removal difficult. This problem is virtually eliminated with the IPTCI Clamp-Lok. Plus, Clamp-Lok bearings can be easily removed or repositioned.

Mounted Unit Nomenclature: CLP205-16



Load Capacities & Life Calculations:

Simple life/load estimations can be derived from the Radial Load column shown on the CL 200 Series insert (page 14). However, if a more specific estimation is desired, the life of a bearing can be calculated by the following formula:

$$L10h = \frac{(C)^3}{P} \times \frac{16,667}{n}$$

Where:

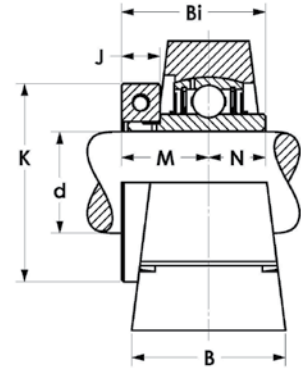
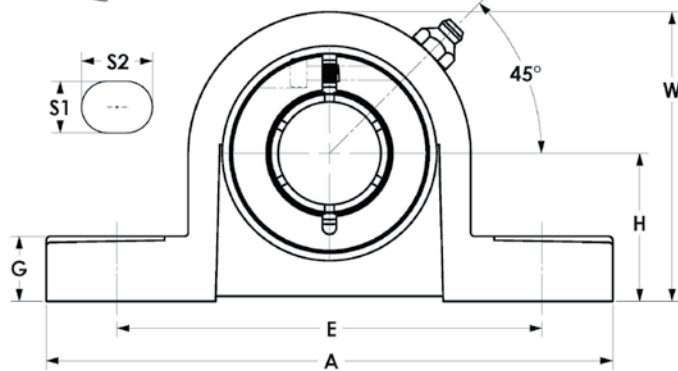
L10h = Life hours
C = Basic Load Rating (lbf)
P = Equivalent Radial Load (lbf)
n = Speed (RPM)

Product Interchange Clamp-Lok Interchange Guide

	IPTCI	PEER	SEALMASTER	AMI
Insert Only	CL	GR	2-1T	UE
2 Bolt Pillow Block	CLP	GRP	NP-T	UEP
	CLPL	GRLP	NPL-T	UEPL
Tapped Base Pillow Block	CLPA	GRPAS	TB-T	UEPA
4 Bolt Flange	CLF	GRF	SF-T	UEF
2 Bolt Flange	CLFL	GRFT	SFT-T, TFT-T	UEFL
3 Bolt Flange	CLFB	GRFB	FB-T	UEFB
4 Bolt Piloted Flange	CLFCS	-	-	UEFCS
	CLFCF	-	SFC-T	UEFCF
	CLFC	GRFC	-	UEFC
Take Up	CLT	GRT	ST-T	UET
Hanger Units	CLHA	GRHA		



- » Standard Duty Bearing
- » Cast Iron
- » Clamp-Lok® Concentric Collar

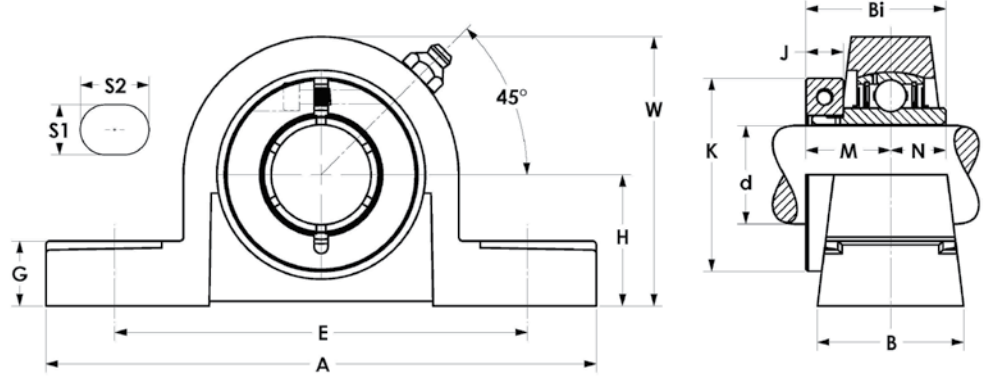


Assembly P/N	Shaft Dia.		Dimensions													Bolt Used	Bearing No.	Housing No.	Weight (lbs.)
	d (in.)	d (mm)	H	A	E	B	S2	S1	G	W	Bi	N	M	J	K				
CLP204-12	3/4	19.0	1.5625	5.0000	3.3750	1.5000	11.1250	7.1250	9.1250	219.32	1.2795	0.5000	0.7795	0.3740	1.7520	3/8	CL204-12	P204	1.7
CLP204		20	33.3	127	95	38	17	11	14	66	32.5	12.7	19.8	9.5	44.5		CL204		1.7
CLP205-14	7/8	22.2	1.7188	5.1250	4.1250	1.5000	11.1250	1.2500	5/8	2.2732	1.4016	0.5603	0.8740	0.3740	1.9370	3/8	CL205-14	P205	2.3
CLP205-15	15/16	23.8	1.7188	5.1250	4.1250	1.5000	11.1250	1/2	5/8	2.2732	1.4016	0.5603	0.8740	0.3740	1.9370		CL205-15		2.3
CLP205		25	36.5	140	105	38	17	13	16	72	35.6	14.3	22.2	9.5	49.2	CL205		2.3	
CLP205-16	1	25.4	1.7188	5.1250	4.1250	1.5000	11.1250	1/2	5/8	2.2732	1.4016	0.5603	0.8740	0.3740	1.9370	CL205-16		2.3	
CLP206-17	1 1/16	26.8	1.1113	6.5625	4.3750	1.3750	13.1250	9/16	11/16	3.1964	1.5630	0.6260	0.9370	0.3740	2.1890	1/2	CL206-17	P206	3.3
CLP206-18	1 1/8	28.6	1.1113	6.5625	4.3750	1.3750	13.1250	9/16	11/16	3.1964	1.5630	0.6260	0.9370	0.3740	2.1890		CL206-18		
CLP206		30	42.9	160	121	44	21	14	18	84	39.7	15.9	23.8	9.5	55.6	CL206		3.4	
CLP206-19	1 3/16	31.8	1.1113	6.5625	4.3750	1.3750	13.1250	9/16	11/16	3.1964	1.5630	0.6260	0.9370	0.3740	2.1890	CL206-19		3.4	
CLP206-20	1 1/4	33.3	1.1113	6.5625	4.3750	1.3750	13.1250	9/16	11/16	3.1964	1.5630	0.6260	0.9370	0.3740	2.1890	CL206-20		3.4	
CLP207-20	1 1/4	33.3	1.7188	6.1732	5.0000	1.2932	7/8	9/16	3/4	3.1116	1.7520	0.6890	1.0630	0.4370	2.6890	1/2	CL207-20	P207	4.3
CLP207-21	1 5/16	35.1	1.7188	6.1732	5.0000	1.2932	7/8	9/16	3/4	3.1116	1.7520	0.6890	1.0630	0.4370	2.6890		CL207-21		
CLP207-22	1 3/8	36.5	1.7188	6.1732	5.0000	1.2932	7/8	9/16	3/4	3.1116	1.7520	0.6890	1.0630	0.4370	2.6890	1/2	CL207-22	P207	4.4
CLP207		35	47.6	166	127	48	22	14	19	94	44.5	17.5	27	11.1	68.3		CL207		
CLP207-23	1 7/16	38.1	1.7188	6.1732	5.0000	1.2932	7/8	9/16	3/4	3.1116	1.7520	0.6890	1.0630	0.4370	2.6890	CL207-23		4.5	
CLP208-24	1 1/2	38.1	1.1516	7.1875	5.7125	2.0000	7/8	9/16	13/16	4.0000	2.0000	0.7480	1.2520	0.4370	2.7795	1/2	CL208-24	P208	5.3
CLP208-25	1 9/16	40.6	1.1516	7.1875	5.7125	2.0000	7/8	9/16	13/16	4.0000	2.0000	0.7480	1.2520	0.4370	2.7795		CL208-25		
CLP208		40	49.2	181	137	51	22	14	21	102	50.8	19	31.8	11.1	70.6	CL208		5.6	
CLP209-26	1 5/8	41.3	2.1875	7.1250	5.3750	2.1875	13/16	19/32	7/8	4.1764	2.0000	0.7480	1.2520	0.4370	3.0630	1/2	CL209-26	P209	5.8
CLP209-27	1 11/16	43.8	2.1875	7.1250	5.3750	2.1875	13/16	19/32	7/8	4.1764	2.0000	0.7480	1.2520	0.4370	3.0630		CL209-27		
CLP209-28	1 3/4	45.1	2.1875	7.1250	5.3750	2.1875	13/16	19/32	7/8	4.1764	2.0000	0.7480	1.2520	0.4370	3.0630	1/2	CL209-28	P209	6.0
CLP209		45	54	190	146	54	21	15	22	109	50.8	19	31.8	11.1	77.8		CL209		
CLP210-30	1 7/8	44.5	2.1250	8.0000	6.1250	2.1250	15/16	23/32	15/16	4.3364	2.0945	0.7480	1.3425	0.5630	3.3740	5/8	CL210-30	P210	7.3
CLP210-31	1 15/16	46.0	2.1250	8.0000	6.1250	2.1250	15/16	23/32	15/16	4.3364	2.0945	0.7480	1.3425	0.5630	3.3740		CL210-31		
CLP210		50	57.2	203	159	57	24	18	24	115	53.2	19	34.1	14.3	85.7	CL210		7.4	
CLP210-32	2	50.8	2.1250	8.0000	6.1250	2.1250	15/16	23/32	15/16	4.3364	2.0945	0.7480	1.3425	0.5630	3.3740	CL210-32		7.5	
CLP211-32	2	50.8	2.1250	8.5000	6.7500	2.3750	15/16	23/32	1 1/16	5.1320	2.2520	0.8740	1.3740	0.5630	3.6890	5/8	CL211-32	P211	8.9
CLP211		55	63.5	220	174	60	24	18	27	128	57.2	22.2	34.9	14.3	93.7		CL211		
CLP211-34	2 1/8	54.0	2.1250	8.5000	6.7500	2.3750	15/16	23/32	1 1/16	5.1320	2.1890	0.8740	1.3150	0.5630	3.6890	5/8	CL211-34	P211	8.9
CLP211-35	2 3/16	56.4	2.1250	8.5000	6.7500	2.3750	15/16	23/32	1 1/16	5.1320	2.2520	0.8740	1.3740	0.5630	3.6890		CL211-35		
CLP212-36	2 1/4	57.1	2.3750	9.1732	7.1132	2.1250	1	25/32	1 1/16	5.3364	2.6260	1.0000	1.6260	0.6890	4.1338	5/8	CL212-36	P212	11.8
CLP212		60	69.8	242	187	64	25.4	20	27	140	66.7	25.4	41.3	17.5	105		CL212		
CLP212-38	2 3/8	59.1	2.3750	9.1732	7.1132	2.1250	1	25/32	1 1/16	5.3364	2.6260	1.0000	1.6260	0.6890	4.1338	5/8	CL212-38	P212	12.2
CLP212-39	2 7/16	63.5	2.3750	9.1732	7.1132	2.1250	1	25/32	1 1/16	5.3364	2.6260	1.0000	1.6260	0.6890	4.1338		CL212-39		

CLPL PILLOW BLOCKS



- » Standard Duty Bearing
- » Cast Iron
- » Clamp-Lok® Concentric Collar

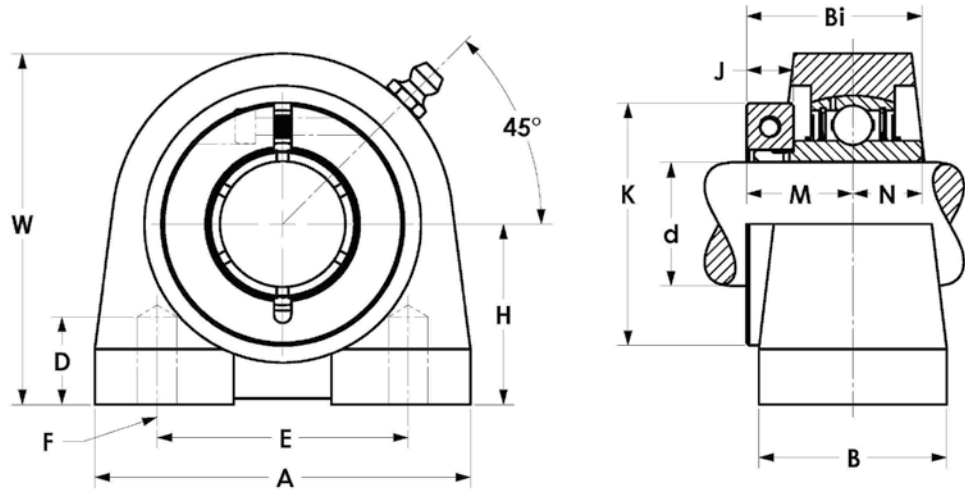


Assembly P/N	Shaft Dia.		Dimensions													Bolt Used	Bearing No.	Housing No.	Weight (lbs.)
	d (in.)	d (mm)	H	A	E	B	S2	S1	G	W	Bi	N	M	J	K				
CLPL204-12	3/4		1 1/4	5	3 3/4	1 1/2	9/16	9/16	9/16	2 1/2	1.2795	0.5	0.7795	0.374	1.752	3/8	CL204-12	PL204	1.14
CLPL204		20	31.8	127	95	38	14	11	14	64	32.5	12.7	19.8	9.5	44.5				
CLPL205-14	7/8		1 5/16	5 1/2	4 1/8	1 1/2	11/16	7/16	5/8	2 45/64	1.4016	0.5603	0.874	0.374	1.937	3/8	CL205-14	PL205	1.76
CLPL205-15	15/16		1 5/16	5 1/2	4 1/8	1 1/2	11/16	7/16	5/8	2 45/64	1.4016	0.5603	0.874	0.374	1.937				
CLPL205		25	33.3	140	105	38	18	11	16	69	35.6	14.3	22.2	9.5	49.2	CL205		1.83	
CLPL205-16	1		1 5/16	5 1/2	4 1/8	1 1/2	11/16	7/16	5/8	2 45/64	1.4016	0.5603	0.874	0.374	1.937	3/8	CL205-16	PL205	1.83
CLPL206-17	1 1/16		1 9/16	6 11/32	4 3/4	1 3/4	13/16	9/16	11/16	3 5/32	1.563	0.626	0.937	0.374	2.189				
CLPL206-18	1 1/8		1 9/16	6 11/32	4 3/4	1 3/4	13/16	9/16	11/16	3 5/32	1.563	0.626	0.937	0.374	2.189	1/2	CL206-18	PL206	2.55
CLPL206		30	39.7	161	121	45	21	14	18	80	39.7	15.9	23.8	9.5	55.6				
CLPL206-19	1 3/16		1 9/16	6 11/32	4 3/4	1 3/4	13/16	9/16	11/16	3 5/32	1.563	0.626	0.937	0.374	2.189	1/2	CL206-19	PL206	2.59
CLPL206-20	1 1/4		1 9/16	6 11/32	4 3/4	1 3/4	13/16	9/16	11/16	3 5/32	1.563	0.626	0.937	0.374	2.189				
CLPL207-20	1 1/4		1 15/16	6 19/32	5	1 7/8	7/8	9/16	25/32	3 21/32	1.752	0.689	1.063	0.437	2.689	1/2	CL207-20	PL207	3.17
CLPL207-21	1 5/16		1 15/16	6 19/32	5	1 7/8	7/8	9/16	25/32	3 21/32	1.752	0.689	1.063	0.437	2.689				
CLPL207-22	1 3/8		1 15/16	6 19/32	5	1 7/8	7/8	9/16	25/32	3 21/32	1.752	0.689	1.063	0.437	2.689	1/2	CL207-22	PL207	3.30
CLPL207		35	46	167	127	48	22	14	20	93	44.5	17.5	27	11.1	68.3				
CLPL207-23	1 7/16		1 15/16	6 19/32	5	1 7/8	7/8	9/16	25/32	3 21/32	1.752	0.689	1.063	0.437	2.689	1/2	CL207-23	PL207	3.37
CLPL208-24	1 1/2		1 15/16	7 1/8	5 7/16	2	7/8	9/16	13/16	4	2	0.748	1.252	0.437	2.7795				
CLPL208-25	1 9/16		1 15/16	7 1/8	5 7/16	2	7/8	9/16	13/16	4	2	0.748	1.252	0.437	2.7795	1/2	CL208-25	PL208	3.86
CLPL208		40	49.2	181	137	51	22	14	21	102	50.8	19	31.8	11.1	70.6				
CLPL209-26	1 5/8		2 1/16	7 1/2	5 3/4	2 1/8	13/16	9/16	29/32	4 7/32	2	0.748	1.252	0.437	3.063	1/2	CL209-26	PL209	4.51
CLPL209-27	1 11/16		2 1/16	7 1/2	5 3/4	2 1/8	13/16	9/16	29/32	4 7/32	2	0.748	1.252	0.437	3.063				
CLPL209-28	1 3/4		2 1/16	7 1/2	5 3/4	2 1/8	13/16	9/16	29/32	4 7/32	2	0.748	1.252	0.437	3.063	1/2	CL209-28	PL209	4.69
CLPL209		45	52.4	191	146	54	20	14	23	107	50.8	19	31.8	11.1	77.8				
CLPL210-30	1 7/8		2 3/16	8 1/32	6 1/4	2 1/4	15/16	11/16	29/32	4 29/64	2.0945	0.748	1.3425	0.563	3.374	5/8	CL210-30	PL210	5.61
CLPL210-31	1 15/16		2 3/16	8 1/32	6 1/4	2 1/4	15/16	11/16	29/32	4 29/64	2.0945	0.748	1.3425	0.563	3.374				
CLPL210		50	55.6	204	159	57	24	18	23	113	53.2	19	34.1	14.3	85.7	5/8	CL210	PL210	5.74
CLPL210-32	2		2 3/16	8 1/32	6 1/4	2 1/4	15/16	11/16	29/32	4 29/64	2.0945	0.748	1.3425	0.563	3.374				
CLPL211-32	2		2 7/16	8 5/8	7	2 3/8	15/16	11/16	1	4 61/64	2.252	0.874	1.374	0.563	3.689	5/8	CL211-32	PL211	7.43
CLPL211-34	2 1/8		2 1/8	8 1/32															
CLPL211		55	61.9	219	178	60	24	18	25.4	126	57.2	22.2	34.9	14.3	93.7	5/8	CL211	PL211	7.67
CLPL211-35	2 3/16		2 7/16	8 5/8	7	2 3/8	15/16	11/16	1	4 61/64	2.252	0.874	1.374	0.563	3.689				
CLPL212-36	2 1/4		2 11/16	9 7/16	7 3/8	2 1/2	1	11/16	1 1/32	5 13/32	2.626	1	1.626	0.689	4.1338	5/8	CL212-36	PL212	10.12
CLPL212		60	68.3	240	187	63	25.4	18	26.5	137	66.7	25.4	41.3	17.5	105				
CLPL212-38	2 3/8		2 11/16	9 7/16	7 3/8	2 1/2	1	11/16	1 1/32	5 13/32	2.626	1	1.626	0.689	4.1338	5/8	CL212-38	PL212	10.46
CLPL212-39	2 7/16		2 11/16	9 7/16	7 3/8	2 1/2	1	11/16	1 1/32	5 13/32	2.626	1	1.626	0.689	4.1338				

CLPA TAPPED BASE PILLOW BLOCKS



- » Standard Duty Bearing
- » Cast Iron
- » Clamp-Lok® Concentric Collar

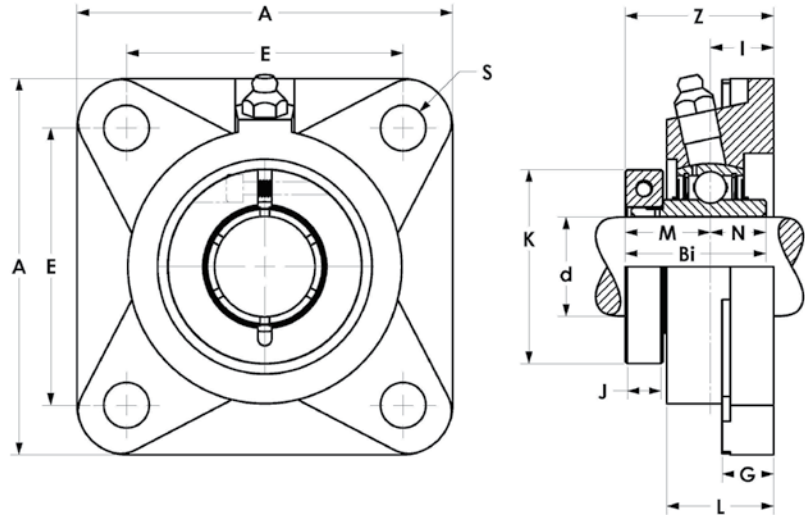


Assembly P/N	Shaft Dia.		Dimensions											Bearing No.	Housing No.	Weight (lbs.)	
	d (in.)	d (mm)	H	A	E	B	W	F-Tapped Holes	D-Min Tap Depth	Bi	N	M	J				K
CLPA204-12	3/4	19.0	1.5625	2.125	2	1.5	2.125	3/8"-16 UNC	1/2	1.2795	0.5	0.7795	0.374	1.752	CL204-12	PA 204	1.4
CLPA204		20	33.3	73	50.8	38	65	3/8"-16 UNC	13	32.5	12.7	19.8	9.5	44.5	CL204		
CLPA205-14	7/8	22.2	1.71875	3	2	1.5	2.125	3/8"-16 UNC	1/2	1.4016	0.5603	0.874	0.374	1.937	CL205-14	PA 205	1.6
CLPA205-15	15/16	23.8	1.71875	3	2	1.5	2.125	3/8"-16 UNC	1/2	1.4016	0.5603	0.874	0.374	1.937	CL205-15		
CLPA205		25	36.5	76	50.8	38	71	3/8"-16 UNC	13	35.6	14.3	22.2	9.5	49.2	CL205		
CLPA205-16	1	25.4	1.71875	3	2	1.5	2.125	3/8"-16 UNC	1/2	1.4016	0.5603	0.874	0.374	1.937	CL205-16		
CLPA206-17	1 1/16	26.8	1.11125	4	3	1.5	3.375	7/16"-14 UNC	5/8	1.563	0.626	0.937	0.374	2.189	CL206-17	PA 206	2.6
CLPA206-18	1 1/8	28.6	1.11125	4	3	1.5	3.375	7/16"-14 UNC	5/8	1.563	0.626	0.937	0.374	2.189	CL206-18		
CLPA206		30	42.9	102	76.2	38	86	7/16"-14 UNC	16	39.7	15.9	23.8	9.5	55.6	CL206		
CLPA206-19	1 3/16	31.8	1.11125	4	3	1.5	3.375	7/16"-14 UNC	5/8	1.563	0.626	0.937	0.374	2.189	CL206-19		
CLPA206-20	1 1/4	33.3	1.11125	4	3	1.5	3.375	7/16"-14 UNC	5/8	1.563	0.626	0.937	0.374	2.189	CL206-20	PA 207	3.6
CLPA207-20	1 1/4	33.3	1.75	4.125	3.125	1.75	3.375	1/2"-13 UNC	3/4	1.752	0.689	1.063	0.437	2.689	CL207-20		
CLPA207-21	1 5/16	35.1	1.75	4.125	3.125	1.75	3.375	1/2"-13 UNC	3/4	1.752	0.689	1.063	0.437	2.689	CL207-21		
CLPA207-22	1 3/8	35.1	1.75	4.125	3.125	1.75	3.375	1/2"-13 UNC	3/4	1.752	0.689	1.063	0.437	2.689	CL207-22		
CLPA207		35	47.6	108	82.6	48	95	1/2"-13 UNC	19	44.5	17.5	27	11.1	68.3	CL207	PA 208	4
CLPA207-23	1 7/16	36.5	1.75	4.125	3.125	1.75	3.375	1/2"-13 UNC	3/4	1.752	0.689	1.063	0.437	2.689	CL207-23		
CLPA208-24	1 1/2	38.1	1.15125	4.5	3.125	1.75	3.15125	1/2"-13 UNC	3/4	2	0.748	1.252	0.437	2.7795	CL208-24		
CLPA208-25	1 9/16	39.7	1.15125	4.5	3.125	1.75	3.15125	1/2"-13 UNC	3/4	2	0.748	1.252	0.437	2.7795	CL208-25		
CLPA208		40	49.2	117	88.9	48	100	1/2"-13 UNC	19	50.8	19	31.8	11.1	70.6	CL208	PA 209	5
CLPA209-26	1 5/8	41.3	2.125	5	3.375	2	4.125	1/2"-13 UNC	3/4	2	0.748	1.252	0.437	3.063	CL209-26		
CLPA209-27	1 11/16	43.0	2.125	5	3.375	2	4.125	1/2"-13 UNC	3/4	2	0.748	1.252	0.437	3.063	CL209-27		
CLPA209-28	1 3/4	44.5	2.125	5	3.375	2	4.125	1/2"-13 UNC	3/4	2	0.748	1.252	0.437	3.063	CL209-28		
CLPA209		45	54	127	95.3	51	108	1/2"-13 UNC	19	50.8	19	31.8	11.1	77.8	CL209	PA 210	5.9
CLPA210-30	1 7/8	46.0	2.125	5.125	4	2	4.5	5/8"-11 UNC	7/8	2.0945	0.748	1.3425	0.563	3.374	CL210-30		
CLPA210-31	1 15/16	47.6	2.125	5.125	4	2	4.5	5/8"-11 UNC	7/8	2.0945	0.748	1.3425	0.563	3.374	CL210-31		
CLPA210		50	57.2	140	101.6	51	117	5/8"-11 UNC	22	53.2	19	34.1	14.3	85.7	CL210		
CLPA210-32	2	50.8	2.125	5.125	4	2	4.5	5/8"-11 UNC	7/8	2.0945	0.748	1.3425	0.563	3.374	CL210-32		

CLF 4-BOLT FLANGE UNITS



- » Standard Duty Bearing
- » Cast Iron
- » Clamp-Lok® Concentric Collar

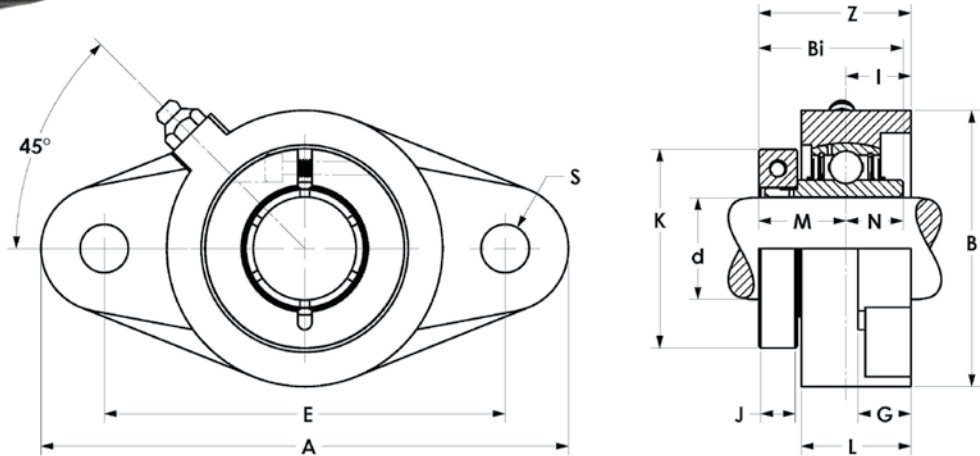


Assembly P/N	Shaft Dia.		Dimensions											Bolt Used	Bearing No.	Housing No.	Weight (lbs.)	
	d (in.)	d (mm)	A	E	I	G	L	S	Z	Bi	N	M	J					K
CLF204-12	3/4	19.05	3 3/8	2 1/2	19/32	7/16	1	7/16	1.37	1.2795	0.5	0.7795	0.374	1.752	3/8	CL204-12	F204	1.54
CLF204		20	86	64	15	11	25.4	11	34.8	32.5	12.7	19.8	9.5	44.5		CL204		1.54
CLF205-14	7/8	22.23	3 3/4	2 3/4	5/8	1/2	1 1/16	29/64	1.50	1.4016	0.5603	0.874	0.374	1.937	3/8	CL205-14	F205	2.16
CLF205-15	15/16	23.81	3 3/4	2 3/4	5/8	1/2	1 1/16	29/64	1.50	1.4016	0.5603	0.874	0.374	1.937		CL205-15		2.21
CLF205		25	95	70	16	13	27	11.5	38.2	35.6	14.3	22.2	9.5	49.2	CL205		2.23	
CLF205-16	1	25.4	3 3/4	2 3/4	5/8	1/2	1 1/16	29/64	1.50	1.4016	0.5603	0.874	0.374	1.937	3/8	CL205-16	F205	2.23
CLF206-17	1 1/16	27.14	4 1/4	3 1/4	45/64	1/2	1 7/32	33/64	1.65	1.563	0.626	0.937	0.374	2.189		CL206-17		
CLF206-18	1 1/8	28.57	4 1/4	3 1/4	45/64	1/2	1 7/32	33/64	1.65	1.563	0.626	0.937	0.374	2.189	7/16	CL206-18	F206	2.75
CLF206		30	108	83	18	13	31	13	41.8	39.7	15.9	23.8	9.5	55.6		CL206		
CLF206-19	1 3/16	30.16	4 1/4	3 1/4	45/64	1/2	1 7/32	33/64	1.65	1.563	0.626	0.937	0.374	2.189	7/16	CL206-19	F206	2.79
CLF206-20	1 1/4	31.75	4 1/4	3 1/4	45/64	1/2	1 7/32	33/64	1.65	1.563	0.626	0.937	0.374	2.189		CL206-20		
CLF207-20	1 1/4	31.75	4 19/32	3 5/8	3/4	19/32	1 11/32	33/64	1.81	1.752	0.689	1.063	0.437	2.689	7/16	CL207-20	F207	3.57
CLF207-21	1 5/16	33.34	4 19/32	3 5/8	3/4	19/32	1 11/32	33/64	1.81	1.752	0.689	1.063	0.437	2.689		CL207-21		
CLF207-22	1 3/8	34.93	4 19/32	3 5/8	3/4	19/32	1 11/32	33/64	1.81	1.752	0.689	1.063	0.437	2.689	7/16	CL207-22	F207	3.70
CLF207		35	117	92	19	15	34	13	46.0	44.5	17.5	27	11.1	68.3		CL207		
CLF207-23	1 7/16	36.51	4 19/32	3 5/8	3/4	19/32	1 11/32	33/64	1.81	1.752	0.689	1.063	0.437	2.689	7/16	CL207-23	F207	3.77
CLF208-24	1 1/2	38.1	5 1/8	4	53/64	19/32	1 13/32	35/64	2.08	2	0.748	1.252	0.437	2.7795		CL208-24		
CLF208-25	1 9/16	39.69	5 1/8	4	53/64	19/32	1 13/32	35/64	2.08	2	0.748	1.252	0.437	2.7795	1/2	CL208-25	F208	4.56
CLF208		40	130	102	21	15	36	14	52.8	50.8	19	31.8	11.1	70.6		CL208		
CLF209-26	1 5/8	41.27	5 13/32	4 1/8	55/64	5/8	1 1/2	5/8	2.12	2	0.748	1.252	0.437	3.063	9/16	CL209-26	F209	5.31
CLF209-27	1 11/16	42.86	5 13/32	4 1/8	55/64	5/8	1 1/2	5/8	2.12	2	0.748	1.252	0.437	3.063		CL209-27		
CLF209-28	1 3/4	44.45	5 13/32	4 1/8	55/64	5/8	1 1/2	5/8	2.12	2	0.748	1.252	0.437	3.063	9/16	CL209-28	F209	5.49
CLF209		45	137	105	22	16	38	16	53.8	50.8	19	31.8	11.1	77.8		CL209		
CLF210-30	1 7/8	44.78	5 5/8	4 3/8	55/64	5/8	1 9/16	5/8	2.21	2.0945	0.748	1.3425	0.563	3.374	9/16	CL210-30	F210	6.08
CLF210-31	1 15/16	46.37	5 5/8	4 3/8	55/64	5/8	1 9/16	5/8	2.21	2.0945	0.748	1.3425	0.563	3.374		CL210-31		
CLF210		50	143	111	22	16	40	16	56.1	53.2	19	34.1	14.3	85.7	CL210		6.24	
CLF210-32	2	50.8	5 5/8	4 3/8	55/64	5/8	1 9/16	5/8	2.21	2.0945	0.748	1.3425	0.563	3.374	9/16	CL210-32	F210	6.34
CLF211-32	2	50.8	6 1/2	5 1/8	63/64	23/32	1 11/16	43/64	2.36	2.252	0.874	1.374	0.563	3.689		CL211-32		
CLF211		55	165	130	25	18	43	17	59.9	57.2	22.2	34.9	14.3	93.7	5/8	CL211	F211	8.07
CLF211-34	2 1/8	54.13	6 1/2													CL211-34		
CLF211-35	2 3/16	57.14	6 1/2	5 1/8	63/64	23/32	1 11/16	43/64	2.36	2.252	0.874	1.374	0.563	3.689	5/8	CL211-35	F211	8.21
CLF212-36	2 1/4	57.14	6 7/8	5 5/8	1 9/64	23/32	1 7/8	43/64	2.77	2.626	1	1.626	0.689	4.1338		CL212-36		
CLF212		60	175	143	29	18	48	17	70.3	66.7	25.4	41.3	17.5	105	5/8	CL212	F212	10.30
CLF212-38	2 3/8	59.14	6 7/8	5 5/8	1 9/64	23/32	1 7/8	43/64	2.77	2.626	1	1.626	0.689	4.1338		CL212-38		
CLF212-39	2 7/16	60.33	6 7/8	5 5/8	1 9/64	23/32	1 7/8	43/64	2.77	2.626	1	1.626	0.689	4.1338	CL212-39		10.50	

CLFL 2-BOLT FLANGE UNITS



- » Standard Duty Bearing
- » Cast Iron
- » Clamp-Lok® Concentric Collar

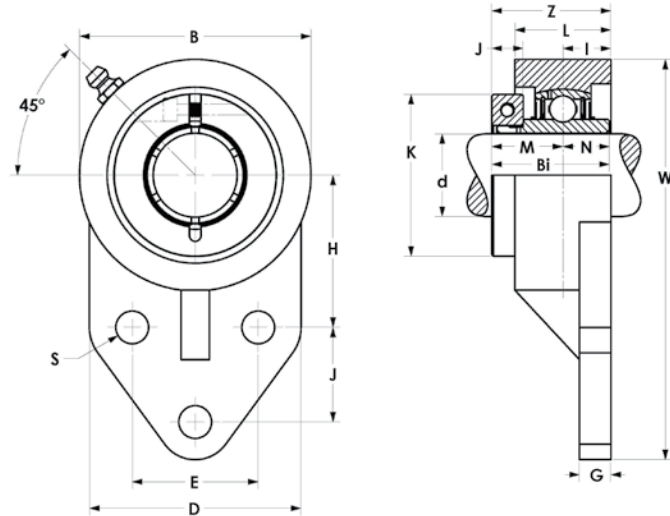


Assembly P/N	Shaft Dia.		Dimensions													Bolt Used	Bearing No.	Housing No.	Weight (lbs.)
	d	(in.) (mm)	A	E	I	G	L	S	B	Z	Bi	N	M	J	K				
CLFL204-12	3/4	4 7/16	3 17/32	19/32	7/16	1	25/64	2 3/8	1.37	1.2795	0.5	0.7795	0.374	1.752	5/16	CL204-12	FL204	1	
CLFL204	20	113	89.7	15	11	25	10	60	34.8	32.5	12.7	19.8	9.5	44.5		CL204			
CLFL205-14	7/8	5 1/8	3 57/64	5/8	1/2	1 1/16	15/32	2 11/16	1.50	1.4016	0.5603	0.874	0.374	1.937	3/8	CL205-14	FL205	1.5	
CLFL205-15	15/16	5 1/8	3 57/64	5/8	1/2	1 1/16	15/32	2 11/16	1.50	1.4016	0.5603	0.874	0.374	1.937		CL205-15			
CLFL205	25	130	98.8	16	13	27	11.9	68	38.2	35.6	14.3	22.2	9.5	49.2	CL205				
CLFL205-16	1	5 1/8	3 57/64	5/8	1/2	1 1/16	15/32	2 11/16	1.50	1.4016	0.5603	0.874	0.374	1.937	3/8	CL205-16	FL206	2.2	
CLFL206-17	1 1/16	5 13/16	4 19/32	45/64	1/2	1 7/32	15/32	3 5/32	1.65	1.563	0.626	0.937	0.374	2.189		CL206-17			
CLFL206-18	1 1/8	5 13/16	4 19/32	45/64	1/2	1 7/32	15/32	3 5/32	1.65	1.563	0.626	0.937	0.374	2.189	3/8	CL206-18	FL206	2.2	
CLFL206	30	148	116.7	18	13	31	11.9	80	41.8	39.7	15.9	23.8	9.5	55.6		CL206			
CLFL206-19	1 3/16	5 13/16	4 19/32	45/64	1/2	1 7/32	15/32	3 5/32	1.65	1.563	0.626	0.937	0.374	2.189	3/8	CL206-19	FL207	2.9	
CLFL206-20	1 1/4	5 13/16	4 19/32	45/64	1/2	1 7/32	15/32	3 5/32	1.65	1.563	0.626	0.937	0.374	2.189		CL206-20			
CLFL207-20	1 1/4	6 11/32	5 1/8	3/4	9/16	1 11/32	33/64	3 17/32	1.81	1.752	0.689	1.063	0.437	2.689	7/16	CL207-20	FL207	2.9	
CLFL207-21	1 5/16	6 11/32	5 1/8	3/4	9/16	1 11/32	33/64	3 17/32	1.81	1.752	0.689	1.063	0.437	2.689		CL207-21			
CLFL207-22	1 3/8	6 11/32	5 1/8	3/4	9/16	1 11/32	33/64	3 17/32	1.81	1.752	0.689	1.063	0.437	2.689	7/16	CL207-22	FL207	2.9	
CLFL207	35	161	130.2	19	14	34	13	90	46.0	44.5	17.5	27	11.1	68.3		CL207			
CLFL207-23	1 7/16	6 11/32	5 1/8	3/4	9/16	1 11/32	33/64	3 17/32	1.81	1.752	0.689	1.063	0.437	2.689	7/16	CL207-23	FL208	3.5	
CLFL208-24	1 1/2	6 7/8	5 21/32	53/64	9/16	1 13/32	33/64	3 15/16	2.08	2	0.748	1.252	0.437	2.7795		CL208-24			
CLFL208-25	1 9/16	6 7/8	5 21/32	53/64	9/16	1 13/32	33/64	3 15/16	2.08	2	0.748	1.252	0.437	2.7795	7/16	CL208-25	FL208	3.5	
CLFL208	40	175	143.7	21	14	36	13	100	52.8	50.8	19	31.8	11.1	70.6		CL208			
CLFL209-26	1 5/8	7 13/32	5 27/32	55/64	19/32	1 1/2	19/32	4 1/4	2.12	2	0.748	1.252	0.437	3.063	1/2	CL209-26	FL209	4.4	
CLFL209-27	1 11/16	7 13/32	5 27/32	55/64	19/32	1 1/2	19/32	4 1/4	2.12	2	0.748	1.252	0.437	3.063		CL209-27			
CLFL209-28	1 3/4	7 13/32	5 27/32	55/64	19/32	1 1/2	19/32	4 1/4	2.12	2	0.748	1.252	0.437	3.063	1/2	CL209-28	FL209	4.4	
CLFL209	45	188	148.4	22	15	38	15	108	53.8	50.8	19	31.8	11.1	77.8		CL209			
CLFL210-30	1 7/8	7 3/4	6 3/16	55/64	1 9/32	1 9/16	5/8	4 17/32	2.21	2.0945	0.748	1.3425	0.563	3.374	1/2	CL210-30	FL210	5.1	
CLFL210-31	1 15/16	7 3/4	6 3/16	55/64	1 9/32	1 9/16	5/8	4 17/32	2.21	2.0945	0.748	1.3425	0.563	3.374		CL210-31			
CLFL210	50	197	157	22	15	40	16	115	56.1	53.2	19	34.1	14.3	85.7	CL210				
CLFL210-32	2	7 3/4	6 3/16	55/64	19/32	1 9/16	5/8	4 17/32	2.21	2.0945	0.748	1.3425	0.563	3.374	9/16	CL210-32	FL211	7.3	
CLFL211-32	2	8 13/16	7 1/4	63/64	23/32	1 11/16	41/64	5 1/8	2.36	2.252	0.874	1.374	0.563	3.689		CL211-32			
CLFL211	55	224	184	25	18	43	16.3	130	59.9	57.2	22.2	34.9	14.3	93.7	CL211				
CLFL211-34	2 1/8	8 13/16	7 1/4	63/64	23/32	1 11/16	41/64	5 1/8	2.36	2.252	0.874	1.374	0.563	3.689	9/16	CL211-34	FL211	7.3	
CLFL211-35	2 3/16	8 13/16	7 1/4	63/64	23/32	1 11/16	41/64	5 1/8	2.36	2.252	0.874	1.374	0.563	3.689		CL211-35			
CLFL212-36	2 1/4	9 27/32	7 15/16	1 9/64	23/32	1 7/8	41/64	5 1/2	2.77	2.626	1	1.626	0.689	4.1338	9/16	CL212-36	FL212	9.5	
CLFL212	60	250	201.6	29	18	48	16.3	140	70.3	66.7	25.4	41.3	17.5	105		CL212			
CLFL212-38	2 3/8	9 27/32	7 15/16	1 9/64	23/32	1 7/8	41/64	5 1/2	2.77	2.626	1	1.626	0.689	4.1338	9/16	CL212-38	FL212	9.5	
CLFL212-39	2 7/16	9 27/32	7 15/16	1 9/64	23/32	1 7/8	41/64	5 1/2	2.77	2.626	1	1.626	0.689	4.1338		CL212-39			

CLFB 3-BOLT FLANGE UNITS



- » Standard Duty Bearing
- » Cast Iron
- » Clamp-Lok® Concentric Collar

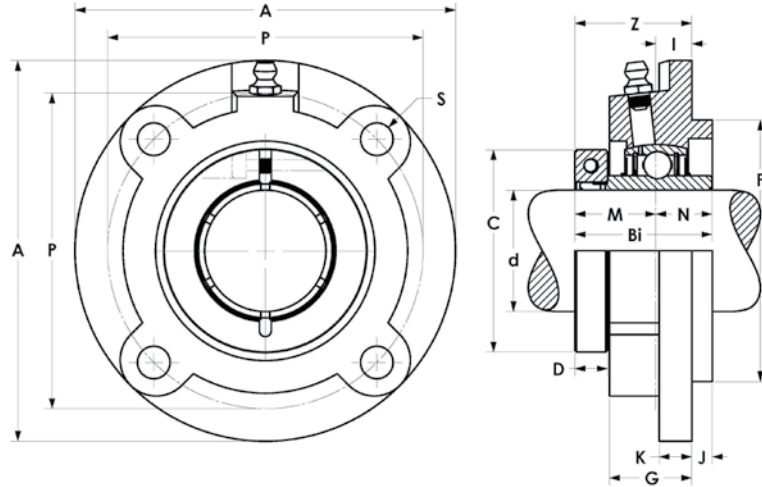


Assembly P/N	Shaft Dia.		Dimensions															Bolt Used	Bearing No.	Housing No.	Weight (lbs.)		
	d (in.)	d (mm)	W	B	D	L	S	G	H	J	E	I	Z	Bi	N	M	J					K	
CLFB204-12	3/4	19.0	108	64	60	25	9.9	8	43.3	22.2	38.1	16	35.8	32.5	12.7	19.8	9.5	44.5	5/16	CL204-12	FB204	1.64	
CLFB204																							1.64
CLFB205-14	7/8	22.2	108	64	60	25	9.9	8	43.3	22.2	38.1	16	35.8	32.5	12.7	19.8	9.5	44.5		CL205-14			1.76
CLFB205-15	15/16	23.8	121	70	64	29	9.9	9.5	46	28.6	41.3	17	39.2	35.6	14.3	22.2	9.5	49.2	5/16	CL205-15	FB205		1.81
CLFB205																							1.83
CLFB205-16	1	25.4	121	70	64	29	9.9	9.5	46	28.6	41.3	17	39.2	35.6	14.3	22.2	9.5	49.2		CL205-16			1.83
CLFB206-17	1 1/16	26.8	137	83	70	32	9.9	9.5	52.4	31.8	46.7	19	42.8	39.7	15.9	23.8	9.5	55.6	5/16	CL206-17	FB206		2.29
CLFB206-18	1 1/8	28.6	137	83	70	32	9.9	9.5	52.4	31.8	46.7	19	42.8	39.7	15.9	23.8	9.5	55.6		CL206-18			2.35
CLFB206																							2.39
CLFB206-19	1 3/16	30.2	137	83	70	32	9.9	9.5	52.4	31.8	46.7	19	42.8	39.7	15.9	23.8	9.5	55.6		CL206-19			2.39
CLFB206-20	1 1/4	31.8	137	83	70	32	9.9	9.5	52.4	31.8	46.7	19	42.8	39.7	15.9	23.8	9.5	55.6		CL206-20			2.39
CLFB207-20	1 1/4	31.8	137	83	70	32	9.9	9.5	52.4	31.8	46.7	19	42.8	39.7	15.9	23.8	9.5	55.6		CL207-20	FB207		3.17
CLFB207-21	1 5/16	33.5	137	83	70	32	9.9	9.5	52.4	31.8	46.7	19	42.8	39.7	15.9	23.8	9.5	55.6		CL207-21			3.24
CLFB207-22	1 3/8	35.1	156	95	83	37	13.1	13	60.3	31.8	50.8	21	48.0	44.5	17.5	27	11.1	68.3	7/16	CL207-22			3.30
CLFB207																							3.30
CLFB207-23	1 7/16	36.5	156	95	83	37	13.1	13	60.3	31.8	50.8	21	48.0	44.5	17.5	27	11.1	68.3		CL207-23			3.37
CLFB208-24	1 1/2	38.1	164	100	78	34	11.1	16	60	41	50	21	52.8	50.8	19	31.8	11.1	70.6		CL208-24	FB208		4.29
CLFB208-25	1 9/16	39.7	164	100	78	34	11.1	16	60	41	50	21	52.8	50.8	19	31.8	11.1	70.6	3/8	CL208-25			4.36
CLFB208																							4.65
CLFB209-26	1 5/8	41.3	174	106	80	34	11.9	18	65	42.9	54	21	52.8	50.8	19	31.8	11.1	77.8		CL209-26	FB209		4.51
CLFB209-27	1 11/16	43.0	174	106	80	34	11.9	18	65	42.9	54	21	52.8	50.8	19	31.8	11.1	77.8	3/8	CL209-27			4.60
CLFB209-28	1 3/4	44.6	174	106	80	34	11.9	18	65	42.9	54	21	52.8	50.8	19	31.8	11.1	77.8		CL209-28			4.69
CLFB209																							4.73
CLFB210-30	1 7/8	46.0	191	118	102	38	13.1	13	74.6	41.3	69.9	21	55.1	53.2	19	34.1	14.3	85.7		CL210-30	FB210		5.58
CLFB210-31	1 15/16	47.6	191	118	102	38	13.1	13	74.6	41.3	69.9	21	55.1	53.2	19	34.1	14.3	85.7		CL210-31			5.69
CLFB210																							5.74
CLFB210-32	2	50.8	191	118	102	38	13.1	13	74.6	41.3	69.9	21	55.1	53.2	19	34.1	14.3	85.7	7/16	CL210-32			5.84

CLFCS 4-BOLT PILOTED FLANGE UNITS



- » Standard Duty Bearing
- » Cast Iron
- » Clamp-Lok® Concentric Collar

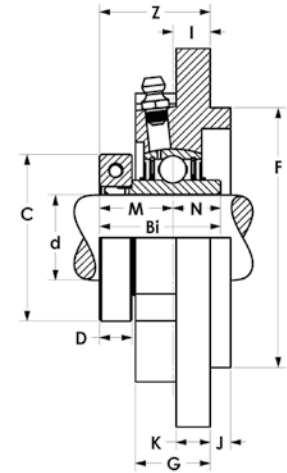
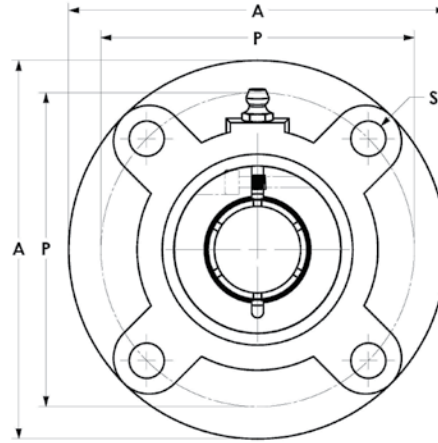


Assembly P/N	Shaft Dia.		Dimensions													Bolt Used	Bearing No.	Housing No.	Weight (lbs.)	
	d (in.)	d (mm)	A	P	S	J	K	G	F	I	Z	Bi	N	M	J					K
CLFCS206-17	1 1/16	30	4 3/8	3 5/8	3/8	15/64	3/8	15/16	3	25/64	1.33	1.563	0.626	0.937	0.374	2.189	5/16	CL206-17	FCS206	2.89
CLFCS206-18	1 1/8	30	4 3/8	3 5/8	3/8	15/64	3/8	15/16	3	25/64	1.33	1.563	0.626	0.937	0.374	2.189	5/16	CL206-18	FCS206	2.95
CLFCS206		30	111	92	9.5	6	9.5	24	76.2	10	33.8	39.7	15.9	23.8	9.5	55.6	5/16	CL206	FCS206	2.99
CLFCS206-19	1 3/16	30	4 3/8	3 5/8	3/8	15/64	3/8	15/16	3	25/64	1.33	1.563	0.626	0.937	0.374	2.189	5/16	CL206-19	FCS206	2.99
CLFCS206-20	1 1/4	30	4 3/8	3 5/8	3/8	15/64	3/8	15/16	3	25/64	1.33	1.563	0.626	0.937	0.374	2.189	5/16	CL206-20	FCS206	2.99
CLFCS207-20	1 1/4	35	5	4 1/8	15/32	3/8	3/8	7/8	3.375	5/16	1.38	1.752	0.689	1.063	0.437	2.689	3/8	CL207-20	FCS207	3.57
CLFCS207-21	1 5/16	35	5	4 1/8	15/32	3/8	3/8	7/8	3.375	5/16	1.38	1.752	0.689	1.063	0.437	2.689	3/8	CL207-21	FCS207	3.64
CLFCS207-22	1 3/8	35	5	4 1/8	15/32	3/8	3/8	7/8	3.375	5/16	1.38	1.752	0.689	1.063	0.437	2.689	3/8	CL207-22	FCS207	3.70
CLFCS207		35	127	104.8	12	9.5	9.5	22.5	85.7	8	35.0	44.5	17.5	27	11.1	68.3	3/8	CL207	FCS207	3.70
CLFCS207-23	1 7/16	35	5	4 1/8	15/32	3/8	3/8	7/8	3.375	5/16	1.38	1.752	0.689	1.063	0.437	2.689	3/8	CL207-23	FCS207	3.77
CLFCS208-24	1 1/2	40	5 1/4	4 3/8	15/32	7/16	7/16	1 1/32	3.625	23/64	1.61	2	0.748	1.252	0.437	2.7795	3/8	CL208-24	FCS208	4.49
CLFCS208-25	1 9/16	40	5 1/4	4 3/8	15/32	7/16	7/16	1 1/32	3.625	23/64	1.61	2	0.748	1.252	0.437	2.7795	3/8	CL208-25	FCS208	4.56
CLFCS208		40	133	111.1	12	11	11	26	92.1	9	40.8	50.8	19	31.8	11.1	70.6	3/8	CL208	FCS208	4.85
CLFCS209-26	1 5/8	45	5 1/4	4 3/8	15/32	7/16	7/16	1 1/32	3.625	23/64	1.61	2	0.748	1.252	0.437	3.063	3/8	CL209-26	FCS209	4.51
CLFCS209-27	1 11/16	45	5 1/4	4 3/8	15/32	7/16	7/16	1 1/32	3.625	23/64	1.61	2	0.748	1.252	0.437	3.063	3/8	CL209-27	FCS209	4.60
CLFCS209-28	1 3/4	45	5 1/4	4 3/8	15/32	7/16	7/16	1 1/32	3.625	23/64	1.61	2	0.748	1.252	0.437	3.063	3/8	CL209-28	FCS209	4.69
CLFCS209		45	133	111.1	12	11	11	26	92.1	9	40.8	50.8	19	31.8	11.1	77.8	3/8	CL209	FCS209	4.73
CLFCS210-30	1 7/8	50	6 3/32	5 1/8	35/64	15/32	7/16	1	4.25	5/16	1.66	2.0945	0.748	1.3425	0.563	3.374	7/16	CL210-30	FCS210	6.18
CLFCS210-31	1 15/16	50	6 3/32	5 1/8	35/64	15/32	7/16	1	4.25	5/16	1.66	2.0945	0.748	1.3425	0.563	3.374	7/16	CL210-31	FCS210	6.29
CLFCS210		50	155	130	14	12	11	25	108	8	42.1	53.2	19	34.1	14.3	85.7	7/16	CL210	FCS210	6.34
CLFCS210-32	2	50	6 3/32	5 1/8	35/64	15/32	7/16	1	4.25	5/16	1.66	2.0945	0.748	1.3425	0.563	3.374	7/16	CL210-32	FCS210	6.44
CLFCS211-32	2	55	6 3/8	5 3/8	35/64	5/8	7/16	1	4.5	9/32	1.65	2.252	0.874	1.374	0.563	3.689	7/16	CL211-32	FCS211	7.13
CLFCS211		55	162	136.5	14	16	11	25	114.3	7	41.9	57.2	22.2	34.9	14.3	93.7	7/16	CL211	FCS211	7.37
CLFCS211-34	2 1/8	55	6 3/8	5 3/8	35/64	5/8	7/16	1	4.5	9/32	1.65	2.252	0.874	1.374	0.563	3.689	7/16	CL211-34	FCS211	7.37
CLFCS211-35	2 3/16	55	6 3/8	5 3/8	35/64	5/8	7/16	1	4.5	9/32	1.65	2.252	0.874	1.374	0.563	3.689	7/16	CL211-35	FCS211	7.51
CLFCS212-36	2 1/4	60	7 3/32	6	5/8	55/64	1/2	1 1/32	5	5/32	1.78	2.626	1	1.626	0.689	4.1338	1/2	CL212-36	FCS212	10.12
CLFCS212		60	180	152.4	16	22	13	26	127	4	45.3	66.7	25.4	41.3	17.5	105	1/2	CL212	FCS212	10.40
CLFCS212-38	2 3/8	60	7 3/32	6	5/8	55/64	1/2	1 1/32	5	5/32	1.78	2.626	1	1.626	0.689	4.1338	1/2	CL212-38	FCS212	10.46
CLFCS212-39	2 7/16	60	7 3/32	6	5/8	55/64	1/2	1 1/32	5	5/32	1.78	2.626	1	1.626	0.689	4.1338	1/2	CL212-39	FCS212	10.60

CLFCF 4-BOLT PILOTED FLANGE UNITS



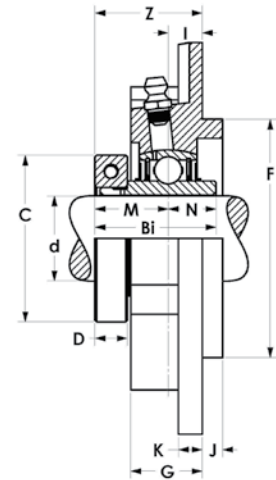
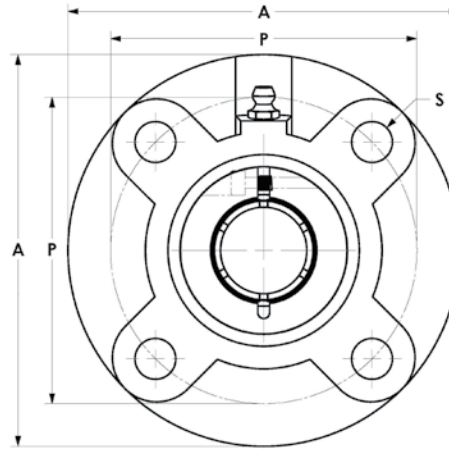
- » Standard Duty Bearing
- » Cast Iron
- » Clamp-Lok® Concentric Collar



Assembly P/N	Shaft Dia.		Dimensions														Bolt Used	Bearing No.	Housing No.	Weight (lbs.)
	d (in.)	d (mm)	A	P	S	J	K	G	F	I	Z	Bi	N	M	J	K				
CLFCF205-14	7/8	4 3/8	3 5/8	13/32	1/4	3/8	55/64	3	7/16	1.31	1.4016	0.5603	0.874	0.374	1.937		CL205-14		2.86	
CLFCF205-15	15/16	4 3/8	3 5/8	13/32	1/4	3/8	55/64	3	7/16	1.31	1.4016	0.5603	0.874	0.374	1.937		CL205-15		2.91	
CLFCF205	25	111	92.1	10.3	6	10	22	76.2	11	33.2	35.6	14.3	22.2	9.5	49.2	5/16	CL205	FCF205	2.93	
CLFCF205-16	1	4 3/8	3 5/8	13/32	1/4	3/8	55/64	3	7/16	1.31	1.4016	0.5603	0.874	0.374	1.937		CL205-16		2.93	
CLFCF206-17	1 1/16	5	4 1/8	15/32	27/64	3/8	25/32	3.375	19/64	1.23	1.563	0.626	0.937	0.374	2.189		CL206-17		4.19	
CLFCF206-18	1 1/8	5	4 1/8	15/32	27/64	3/8	25/32	3.375	19/64	1.23	1.563	0.626	0.937	0.374	2.189		CL206-18		4.25	
CLFCF206	30	127	104.8	11.9	11	10	20	85.7	7.5	31.3	39.7	15.9	23.8	9.5	55.6	3/8	CL206	FCF206	4.29	
CLFCF206-19	1 3/16	5	4 1/8	15/32	27/64	3/8	25/32	3.375	19/64	1.23	1.563	0.626	0.937	0.374	2.189		CL206-19		4.29	
CLFCF206-20	1 1/4	5	4 1/8	15/32	27/64	3/8	25/32	3.375	19/64	1.23	1.563	0.626	0.937	0.374	2.189		CL206-20		4.29	
CLFCF207-20	1 1/4	5 1/4	4 3/8	15/32	15/32	1/2	7/8	3.625	9/32	1.34	1.752	0.689	1.063	0.437	2.689		CL207-20		4.47	
CLFCF207-21	1 5/16	5 1/4	4 3/8	15/32	15/32	1/2	7/8	3.625	9/32	1.34	1.752	0.689	1.063	0.437	2.689		CL207-21		4.54	
CLFCF207-22	1 3/8	5 1/4	4 3/8	15/32	15/32	1/2	7/8	3.625	9/32	1.34	1.752	0.689	1.063	0.437	2.689	3/8	CL207-22	FCF207	4.60	
CLFCF207	35	133	111.1	11.9	12	12	22	92.1	7	34.0	44.5	17.5	27	11.1	68.3		CL207		4.60	
CLFCF207-23	1 7/16	5 1/4	4 3/8	15/32	15/32	1/2	7/8	3.625	9/32	1.34	1.752	0.689	1.063	0.437	2.689		CL207-23		4.67	
CLFCF208-24	1 1/2	5 1/4	4 3/8	15/32	15/32	1/2	1 1/32	3.625	3/8	1.63	2	0.748	1.252	0.437	2.7795		CL208-24		4.89	
CLFCF208-25	1 9/16	5 1/4	4 3/8	15/32	15/32	1/2	1 1/32	3.625	3/8	1.63	2	0.748	1.252	0.437	2.7795	3/8	CL208-25	FCF208	4.96	
CLFCF208	40	133	111.1	11.9	12	12	26	92.1	9.5	41.3	50.8	19	31.8	11.1	70.6		CL208		5.25	
CLFCF209-26	1 5/8	6 1/8	5 1/8	17/32	15/32	29/64	7/8	4.25	7/32	1.47	2	0.748	1.252	0.437	3.063		CL209-26		6.31	
CLFCF209-27	1 11/16	6 1/8	5 1/8	17/32	15/32	29/64	7/8	4.25	7/32	1.47	2	0.748	1.252	0.437	3.063		CL209-27		6.40	
CLFCF209-28	1 3/4	6 1/8	5 1/8	17/32	15/32	29/64	7/8	4.25	7/32	1.47	2	0.748	1.252	0.437	3.063		CL209-28		6.49	
CLFCF209	45	156	130.2	13.5	12	12	22	108	5.5	37.3	50.8	19	31.8	11.1	77.8		CL209		6.53	
CLFCF210-30	1 7/8	6 3/8	5 3/8	17/32	5/8	1/2	1 1/16	4.5	11/32	1.70	2.0945	0.748	1.3425	0.563	3.374		CL210-30		7.48	
CLFCF210-31	1 15/16	6 3/8	5 3/8	17/32	5/8	1/2	1 1/16	4.5	11/32	1.70	2.0945	0.748	1.3425	0.563	3.374		CL210-31		7.59	
CLFCF210	50	162	136.5	13.5	16	12	27	114.3	9	43.1	53.2	19	34.1	14.3	85.7	7/16	CL210	FCF210	7.64	
CLFCF210-32	2	6 3/8	5 3/8	17/32	5/8	1/2	1 1/16	4.5	11/32	1.70	2.0945	0.748	1.3425	0.563	3.374		CL210-32		7.74	
CLFCF211-32	2	7 1/8	6	19/32	7/8	1/2	7/8	5	7/32	1.59	2.252	0.874	1.374	0.563	3.689		CL211-32		9.23	
CLFCF211-34	2 1/8	6 3/8															CL211-34		9.47	
CLFCF211	55	181	152.4	15.1	22	12	22	127	5.5	40.4	57.2	22.2	34.9	14.3	93.7	1/2	CL211	FCF211	9.47	
CLFCF211-35	2 3/16	7 1/8	6	19/32	7/8	1/2	7/8	5	7/32	1.59	2.252	0.874	1.374	0.563	3.689		CL211-35		9.61	

CLFC 4-BOLT PILOTED FLANGE UNITS

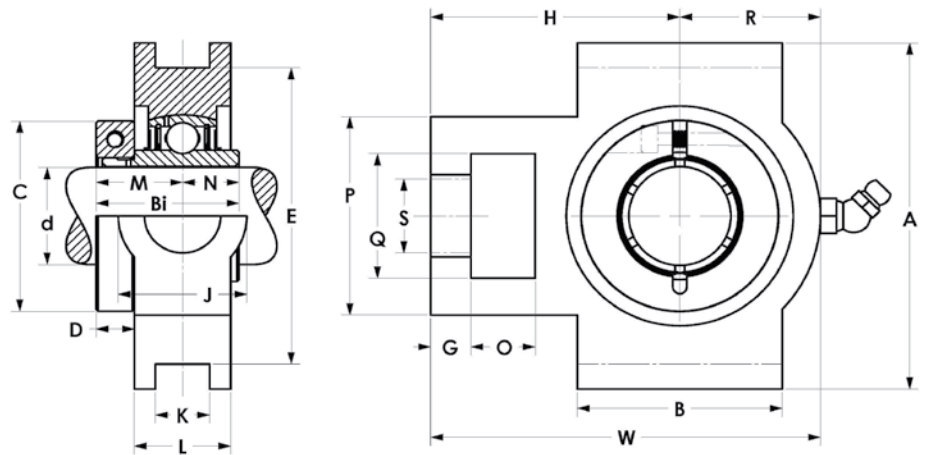
- » Standard Duty Bearing
- » Cast Iron
- » Clamp-Lok® Concentric Collar



Assembly P/N	Shaft Dia.		Dimensions													Bolt Used	Bearing No.	Housing No.	Weight (lbs.)
	d	(in.) (mm)	A	P	S	J	K	G	F	I	Z	Bi	N	M	J				
CLFC204-12	3/4	3 15/16	3 5/64	15/32	3/16	9/32	13/16	2.4409	25/64	1.2795	0.5	0.7795	0.374	1.752	M10	CL204-12	FC204	2.1	
CLFC204		20	100	78	12	5	7	20.5	62	10	32.5	12.7	19.8	9.5	44.5	M10	CL204		2.1
CLFC205-14	7/8	4 1/2	3 35/64	15/32	15/64	9/32	13/16	2.7559	25/64	1.4016	0.5603	0.874	0.374	1.937	M10	CL205-14		2.7	
CLFC205-15	15/16	4 1/2	3 35/64	15/32	15/64	9/32	13/16	2.7559	25/64	1.4016	0.5603	0.874	0.374	1.937	M10	CL205-15	FC205	2.7	
CLFC205		25	115	90	12	6	7	21	70	10	35.6	14.3	22.2	9.5	49.2	M10		CL205	2.7
CLFC205-16	1	4 1/2	3 35/64	15/32	15/64	9/32	13/16	2.7559	25/64	1.4016	0.5603	0.874	0.374	1.937	M10	CL205-16		2.7	
CLFC206-17	1 1/16	4 15/16	3 15/16	15/32	5/16	5/16	29/32	3.1496	25/64	1.563	0.626	0.937	0.374	2.189	M10	CL206-17		3.6	
CLFC206-18	1 1/8	4 15/16	3 15/16	15/32	5/16	5/16	29/32	3.1496	25/64	1.563	0.626	0.937	0.374	2.189	M10	CL206-18		3.7	
CLFC206		30	125	100	12	8	8	23	80	10	39.7	15.9	23.8	9.5	55.6	M10	CL206	FC206	3.7
CLFC206-19	1 3/16	4 15/16	3 15/16	15/32	5/16	5/16	29/32	3.1496	25/64	1.563	0.626	0.937	0.374	2.189	M10	CL206-19		3.7	
CLFC206-20	1 1/4	4 15/16	3 15/16	15/32	5/16	5/16	29/32	3.1496	25/64	1.563	0.626	0.937	0.374	2.189	M10	CL206-20		3.7	
CLFC207-20	1 1/4	5 5/16	4 21/64	35/64	5/16	1 1/32	1 1/32	3.5433	7/16	1.752	0.689	1.063	0.437	2.689	M12	CL207-20		4.0	
CLFC207-21	1 5/16	5 5/16	4 21/64	35/64	5/16	1 1/32	1 1/32	3.5433	7/16	1.752	0.689	1.063	0.437	2.689	M12	CL207-21		4.0	
CLFC207-22	1 3/8	5 5/16	4 21/64	35/64	5/16	1 1/32	1 1/32	3.5433	7/16	1.752	0.689	1.063	0.437	2.689	M12	CL207-22	FC207	4.1	
CLFC207		35	135	110	14	8	9	26	90	11	44.5	17.5	27	11.1	68.3	M12	CL207		4.1
CLFC207-23	1 7/16	5 5/16	4 21/64	35/64	5/16	1 1/32	1 1/32	3.5433	7/16	1.752	0.689	1.063	0.437	2.689	M12	CL207-23		4.2	
CLFC208-24	1 1/2	5 11/16	4 23/32	35/64	13/32	1 1/32	1 1/32	3.937	7/16	2	0.748	1.252	0.437	2.7795	M12	CL208-24		4.9	
CLFC208-25	1 9/16	5 11/16	4 23/32	35/64	13/32	1 1/32	1 1/32	3.937	7/16	2	0.748	1.252	0.437	2.7795	M12	CL208-25	FC208	5.0	
CLFC208		40	145	120	14	10	9	26	100	11	50.8	19	31.8	11.1	70.6	M12	CL208		5.2
CLFC209-26	1 5/8	6 5/16	5 13/64	5/8	15/32	35/64	1 1/32	4.1339	25/64	2	0.748	1.252	0.437	3.063	M14	CL209-26		6.7	
CLFC209-27	1 11/16	6 5/16	5 13/64	5/8	15/32	35/64	1 1/32	4.1339	25/64	2	0.748	1.252	0.437	3.063	M14	CL209-27	FC209	6.8	
CLFC209-28	1 3/4	6 5/16	5 13/64	5/8	15/32	35/64	1 1/32	4.1339	25/64	2	0.748	1.252	0.437	3.063	M14	CL209-28		6.9	
CLFC209		45	160	132	16	12	14	26	105	10	50.8	19	31.8	11.1	77.8	M14	CL209		6.9
CLFC210-30	1 7/8	6 1/2	5 7/16	5/8	15/32	35/64	1 3/32	4.3307	25/64	2.0945	0.748	1.3425	0.563	3.374	M14	CL210-30		7.3	
CLFC210-31	1 15/16	6 1/2	5 7/16	5/8	15/32	35/64	1 3/32	4.3307	25/64	2.0945	0.748	1.3425	0.563	3.374	M14	CL210-31	FC210	7.4	
CLFC210		50	165	138	16	12	14	28	110	10	53.2	19	34.1	14.3	85.7	M14		CL210	7.4
CLFC210-32	2	6 1/2	5 7/16	5/8	15/32	35/64	1 3/32	4.3307	25/64	2.0945	0.748	1.3425	0.563	3.374	M14	CL210-32		7.5	
CLFC211-32	2	7 5/16	5 29/32	3/4	15/32	19/32	1 7/32	4.9213	1/2	2.252	0.874	1.374	0.563	3.689	M16	CL211-32		8.7	
CLFC211		55	185	150	19	12	15	31	125	13	57.2	22.2	34.9	14.3	93.7	M16	CL211		9.1
CLFC211-34	2 1/8	7 5/16	5 29/32	3/4	15/32	19/32	1 7/32	4.9213	1/2	2.252	0.874	1.374	0.563	3.689	M16	CL211-34	FC211	9.0	
CLFC211-35	2 3/16	7 5/16	5 29/32	3/4	15/32	19/32	1 7/32	4.9213	1/2	2.252	0.874	1.374	0.563	3.689	M16	CL211-35		9.1	
CLFC212-36	2 1/4	7 11/16	6 19/64	3/4	15/32	19/32	1 27/64	5.315	43/64	2.626	1	1.626	0.689	4.1338	M16	CL212-36		10.3	
CLFC212		60	195	160	19	12	15	36	135	17	66.7	25.4	41.3	17.5	105	M16	CL212		10.6
CLFC212-38	2 3/8	7 11/16	6 19/64	3/4	15/32	19/32	1 27/64	5.315	43/64	2.626	1	1.626	0.689	4.1338	M16	CL212-38	FC212	10.7	
CLFC212-39	2 7/16	7 11/16	6 19/64	3/4	15/32	19/32	1 27/64	5.315	43/64	2.626	1	1.626	0.689	4.1338	M16	CL212-39		10.8	



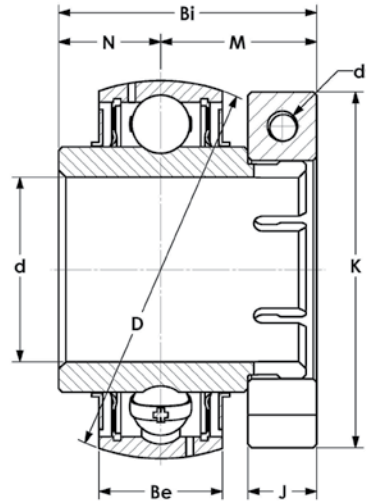
- » Standard Duty Bearing
- » Cast Iron
- » Clamp-Lok® Concentric Collar



Assembly P/N	Shaft Dia.		Dimensions																	Bearing No.	Housing No.	Weight (lbs.)	
	d (in.)	d (mm)	O	G	P	Q	S	B	k	E	A	W	J	L	R	H	Bi	N	M				J
CLT204-12	3/4	5/8	13/32	2	1 1/4	3/4	2	17/32	3	3 1/2	3 11/16	1 1/4	13/16	1 5/16	2 13/32	1.2795	0.5	0.7795	0.374	1.752	CL204-12	T204	1.84
CLT204	20	16	10	51	32	19	51	13.5	76.2	89	94	32	21	33	61	32.5	12.7	19.8	9.5	44.5	CL204		1.84
CLT205-14	7/8	5/8	13/32	2	1 1/4	3/4	2	17/32	3	3 1/2	3 13/16	1 1/4	15/16	1 3/8	2 7/16	1.4016	0.5603	0.874	0.374	1.937	CL205-14	T205	2.16
CLT205-15	15/16	5/8	13/32	2	1 1/4	3/4	2	17/32	3	3 1/2	3 13/16	1 1/4	15/16	1 3/8	2 7/16	1.4016	0.5603	0.874	0.374	1.937	CL205-15		2.21
CLT205	25	16	10	51	32	19	51	13.5	76.2	89	97	32	24	35	62	35.6	14.3	22.2	9.5	49.2	CL205		2.23
CLT205-16	1	5/8	13/32	2	1 1/4	3/4	2	17/32	3	3 1/2	3 13/16	1 1/4	15/16	1 3/8	2 7/16	1.4016	0.5603	0.874	0.374	1.937	CL205-16		2.23
CLT206-17	1 1/16	5/8	13/32	2 7/32	1 15/32	55/64	2 1/4	17/32	3 1/2	4 1/32	4 7/16	1 15/32	1 3/32	1 11/16	2 3/4	1.563	0.626	0.937	0.374	2.189	CL206-17	T206	3.19
CLT206-18	1 1/8	5/8	13/32	2 7/32	1 15/32	55/64	2 1/4	17/32	3 1/2	4 1/32	4 7/16	1 15/32	1 3/32	1 11/16	2 3/4	1.563	0.626	0.937	0.374	2.189	CL206-18		3.25
CLT206	30	16	10	56	37	22	57	13.5	88.9	102	113	37	28	43	70	39.7	15.9	23.8	9.5	55.6	CL206		3.29
CLT206-19	1 3/16	5/8	13/32	2 7/32	1 15/32	55/64	2 1/4	17/32	3 1/2	4 1/32	4 7/16	1 15/32	1 3/32	1 11/16	2 3/4	1.563	0.626	0.937	0.374	2.189	CL206-19		3.29
CLT206-20	1 1/4	5/8	13/32	2 7/32	1 15/32	55/64	2 1/4	17/32	3 1/2	4 1/32	4 7/16	1 15/32	1 3/32	1 11/16	2 3/4	1.563	0.626	0.937	0.374	2.189	CL206-20		3.29
CLT207-20	1 1/4	5/8	1/2	2 17/32	1 15/32	55/64	2 17/32	17/32	3 1/2	4 1/32	5 3/32	1 15/32	1 3/16	2	3 1/16	1.752	0.689	1.063	0.437	2.689	CL207-20	T207	3.77
CLT207-21	1 5/16	5/8	1/2	2 17/32	1 15/32	55/64	2 17/32	17/32	3 1/2	4 1/32	5 3/32	1 15/32	1 3/16	2	3 1/16	1.752	0.689	1.063	0.437	2.689	CL207-21		3.84
CLT207-22	1 3/8	5/8	1/2	2 17/32	1 15/32	55/64	2 17/32	17/32	3 1/2	4 1/32	5 3/32	1 15/32	1 3/16	2	3 1/16	1.752	0.689	1.063	0.437	2.689	CL207-22		3.90
CLT207	35	16	13	64	37	22	64	13.5	88.9	102	129	37	30	51	78	44.5	17.5	27	11.1	68.3	CL207		3.90
CLT207-23	1 7/16	5/8	1/2	2 17/32	1 15/32	55/64	2 17/32	17/32	3 1/2	4 1/32	5 3/32	1 15/32	1 3/16	2	3 1/16	1.752	0.689	1.063	0.437	2.689	CL207-23		3.97
CLT208-24	1 1/2	3/4	5/8	3 9/32	1 15/16	1 9/64	3 9/32	11/16	4	4 1/2	5 21/32	1 15/16	1 5/16	2 7/32	3 15/32	2	0.748	1.252	0.437	2.7795	CL208-24	T208	5.79
CLT208-25	1 9/16	3/4	5/8	3 9/32	1 15/16	1 9/64	3 9/32	11/16	4	4 1/2	5 21/32	1 15/16	1 5/16	2 7/32	3 15/32	2	0.748	1.252	0.437	2.7795	CL208-25		5.86
CLT208	40	19	16	83	49	29	83	17.5	101.6	114	144	49	33	56	88	50.8	19	31.8	11.1	70.6	CL208		6.15
CLT209-26	1 5/8	3/4	5/8	3 9/32	1 15/16	1 9/64	3 9/32	11/16	4	4 19/32	5 21/32	1 15/16	1 3/8	2 1/4	3 7/16	2	0.748	1.252	0.437	3.063	CL209-26	T209	5.61
CLT209-27	1 11/16	3/4	5/8	3 9/32	1 15/16	1 9/64	3 9/32	11/16	4	4 19/32	5 21/32	1 15/16	1 3/8	2 1/4	3 7/16	2	0.748	1.252	0.437	3.063	CL209-27		5.70
CLT209-28	1 3/4	3/4	5/8	3 9/32	1 15/16	1 9/64	3 9/32	11/16	4	4 19/32	5 21/32	1 15/16	1 3/8	2 1/4	3 7/16	2	0.748	1.252	0.437	3.063	CL209-28		5.79
CLT209	45	19	16	83	49	29	83	17.5	101.6	117	144	49	35	57	87	50.8	19	31.8	11.1	77.8	CL209		5.83
CLT210-30	1 7/8	3/4	5/8	3 9/32	1 15/16	1 9/64	3 3/8	11/16	4	4 19/32	5 7/8	1 15/16	1 15/32	2 5/16	3 17/32	2.0945	0.748	1.3425	0.563	3.374	CL210-30	T210	6.18
CLT210-31	1 15/16	3/4	5/8	3 9/32	1 15/16	1 9/64	3 3/8	11/16	4	4 19/32	5 7/8	1 15/16	1 15/32	2 5/16	3 17/32	2.0945	0.748	1.3425	0.563	3.374	CL210-31		6.29
CLT210	50	19	16	83	49	29	86	17.5	101.6	117	149	49	37	59	90	53.2	19	34.1	14.3	85.7	CL210		6.34
CLT210-32	2	3/4	5/8	3 9/32	1 15/16	1 9/64	3 3/8	11/16	4	4 19/32	5 7/8	1 15/16	1 15/32	2 5/16	3 17/32	2.0945	0.748	1.3425	0.563	3.374	CL210-32		6.44
CLT211-32	2	1	3/4	4 1/32	2 17/32	1 3/8	3 3/4	1 1/16	5 1/8	5 3/4	6 23/32	2 17/32	1 1/2	2 9/16	4 3/16	2.252	0.874	1.374	0.563	3.689	CL211-32	T211	8.93
CLT211	55	25	19	102	64	35	95	27	130.2	146	171	64	38	65	106	57.2	22.2	34.9	14.3	93.7	CL211		9.17
CLT211-34	2 1/8	1	3/4	4 1/32	2 17/32	1 3/8	3 3/4	1 1/16	5 1/8	5 3/4	6 23/32	2 17/32	1 1/2	2 9/16	4 3/16	2.252	0.874	1.374	0.563		CL211-34		9.17
CLT211-35	2 3/16	1	3/4	4 1/32	2 17/32	1 3/8	3 3/4	1 1/16	5 1/8	5 3/4	6 23/32	2 17/32	1 1/2	2 9/16	4 3/16	2.252	0.874	1.374	0.563	3.689	CL211-35		9.31
CLT212-36	2 1/4	1 1/4	3/4	4 1/32	2 17/32	1 3/8	4 1/32	1 1/16	5 1/8	5 3/4	7 5/8	2 17/32	1 21/32	2 15/16	4 11/16	2.626	1	1.626	0.689	4.1338	CL212-36	T212	11.22
CLT212	60	32	19	102	64	35	102	27	130.2	146	194	64	42	75	119	66.7	25.4	41.3	17.5	105	CL212		11.50
CLT212-38	2 3/8	1 1/4	3/4	4 1/32	2 17/32	1 3/8	4 1/32	1 1/16	5 1/8	5 3/4	7 5/8	2 17/32	1 21/32	2 15/16	4 11/16	2.626	1	1.626	0.689	4.1338	CL212-38		11.56
CLT212-39	2 7/16	1 1/4	3/4	4 1/32	2 17/32	1 3/8	4 1/32	1 1/16	5 1/8	5 3/4	7 5/8	2 17/32	1 21/32	2 15/16	4 11/16	2.626	1	1.626	0.689	4.1338	CL212-39		11.70



- » Standard Duty Bearing
- » Cast Iron
- » Clamp-Lok® Concentric Collar



Assembly P/N	Shaft Dia.		Dimensions							Basic Load Rating CN (Lbf)	Basic Static Load Rating CN (Lbf)	Weight (lbs.)
	d (in.)	d (mm)	D	Bi	Be	N	M	H	K			
CL204-12	3/4	1.8504	1.2795	0.5906	0.5	0.7795	0.374	1.752	8-32x5/8	2,900	2500	0.49
CL204	20	47	32.5	15	12.7	19.8	9.5	44.5	8-32x5/8	12,800	6600	0.49
CL205-14	7/8	2.0472	1.4016	0.5906	0.5603	0.874	0.374	1.937	8-32x5/8	3,170	1,770	0.77
CL205-15	15/16	2.0472	1.4016	0.5906	0.5603	0.874	0.374	1.937	8-32x5/8	3,170	1,770	0.77
CL205	25	52	35.6	15	14.3	22.2	9.5	49.2	8-32x5/8	14,000	7,800	0.77
CL205-16	1	2.0472	1.4016	0.5906	0.5603	0.874	0.374	1.937	8-32x5/8	3,170	1,770	0.77
CL206-17	1 1/16	2.4409	1.563	0.7087	0.626	0.937	0.374	2.189	8-32x5/8	4,400	2,540	1.10
CL206-18	1 1/8	2.4409	1.563	0.7087	0.626	0.937	0.374	2.189	8-32x5/8	4,400	2,540	1.10
CL206	30	62	39.7	18	15.9	23.8	9.5	55.6	8-32x5/8	19,400	11,200	1.10
CL206-19	1 3/16	2.4409	1.563	0.7087	0.626	0.937	0.374	2.189	8-32x5/8	4,400	2,540	1.10
CL206-20	1 1/4	2.4409	1.563	0.7087	0.626	0.937	0.374	2.189	8-32x5/8	4,400	2,540	1.10
CL207-20	1 1/4	2.8346	1.752	0.748	0.689	1.063	0.437	2.689	10-24x3/4	5,800	3,450	1.46
CL207-21	1 5/16	2.8346	1.752	0.748	0.689	1.063	0.437	2.689	10-24x3/4	5,800	3,450	1.46
CL207-22	1 3/8	2.8346	1.752	0.748	0.689	1.063	0.437	2.689	10-24x3/4	5,800	3,450	1.46
CL207	35	72	44.5	19	17.5	27	11.1	68.3	10-24x3/4	25,600	15,200	1.46
CL207-23	1 7/16	2.8346	1.752	0.748	0.689	1.063	0.437	2.689	10-24x3/4	5,800	3,450	1.46
CL208-24	1 1/2	3.1469	2	0.8661	0.748	1.252	0.437	2.7795	10-24x3/4	7,400	4,490	1.79
CL208-25	1 9/16	3.1469	2	0.8661	0.748	1.252	0.437	2.7795	10-24x3/4	7,400	4,490	1.79
CL208	40	80	50.8	22	19	31.8	11.1	70.6	10-24x3/4	32,600	19,800	1.79
CL209-26	1 5/8	3.3464	2	0.8661	0.748	1.252	0.437	3.063	10-24x3/4	7,420	4,630	1.83
CL209-27	1 11/16	3.3464	2	0.8661	0.748	1.252	0.437	3.063	10-24x3/4	7,420	4,630	1.83
CL209-28	1 3/4	3.3464	2	0.8661	0.748	1.252	0.437	3.063	10-24x3/4	7,420	4,630	1.83
CL209	45	85	50.8	22	19	31.8	11.1	77.8	10-24x3/4	32,700	20,400	1.83
CL210-30	1 7/8	3.5433	2.0945	0.8661	0.748	1.3425	0.563	3.374	1/4-20x1	7,900	5,240	2.40
CL210-31	1 15/16	3.5433	2.0945	0.8661	0.748	1.3425	0.563	3.374	1/4-20x1	7,900	5,240	2.40
CL210	50	90	53.2	22	19	34.1	14.3	85.7	1/4-20x1	35,000	23,100	2.40
CL210-32	2	3.5433	2.0945	0.8661	0.748	1.3425	0.563	3.374	1/4-20x1	7,900	5,240	2.40
CL211-32	2	3.937	2.252	0.9449	0.874	1.374	0.563	3.689	1/4-20x1	9,800	6,630	2.91
CL211	55	100	57.2	24	22.2	34.9	14.3	93.7	1/4-20x1	43,300	29,200	2.91
CL211-34		3.937	2.252	0.9449	0.874	1.374	0.563	3.689	1/4-20x1	9,800	6,630	2.91
CL211-35	2 3/16	3.937	2.252	0.9449	0.874	1.374	0.563	3.689	1/4-20x1	9,800	6,630	2.91
CL212-36	2 1/4	4.307	2.626	1.0236	1	1.626	0.689	4.1338	5/16-18x1	10820	7470	4.30
CL212	60	110	66.7	26	25.4	41.3	17.5	105	5/16-18x1	47700	32900	4.30
CL212-38	2 3/8	4.307	2.626	1.0236	1	1.626	0.689	4.1338	5/16-18x1	10820	7470	4.30
CL212-39	2 7/16	4.307	2.626	1.0236	1	1.626	0.689	4.1338	5/16-18x1	10820	7470	4.30

INSTALLATION & LUBRICATION

Shaft Tolerances

Shaft Diameter	Shaft Tolerance
1/2" – 1 15/16"	Nominal to - .0005"
2" – 3 3/16"	Nominal to - .0010"
3 1/4" – Up	Nominal to - .0015"

For maximum life, IPTCI recommends a fit as close to nominal as possible. Turned and ground shafting is also beneficial as it tends to be rounder, straighter and free of burrs or other flaws.

Mounting Instructions*

Warning: To ensure the drive is not expectedly started, turn off and lockout the power source before proceeding.

1. Clean the shaft and bearing bore thoroughly.
2. Slip bearing into position. Be sure that the bearing is not on a worn section of the shaft. If the shaft fit is snug, tap gently on to the inner ring of the bearing face only with a soft driver. **DO NOT HAMMER ON THE OUTER RING OR HOUSING.**
3. The bearing outer ring OD is spherical and swivels in the housing to accommodate misalignment if any from the frame on which it is mounted. Snug the hold-down bolts and insert the shaft to where it will eventually be installed. Adjust the housing if needed to align belts or other drives.
4. Tighten hold-down bolts to the proper torque (see instruction manual). Turn shaft by hand. Resistance to turning should be the same as before tightening hold-down bolts.
5. For Concentric Locking Collar Units tighten the cap screw in the concentric collar to the recommended torque level listed in the instruction manual.

Lubrication Tips**

All IPTCI bearing units are factory prelubricated and, therefore, do not require supplemental grease before service life begins. Relubrication, when administered correctly, can increase the life of a bearing substantially. IPTCI recommends the following general guidelines to maximize your bearing life:

RPM	Temperature	Environmental Condition	Interval
100	32° F – 120° F	Clean	6-12 months
500	32° F – 150° F	Clean	2-6 months
1,000	32° F – 210° F	Clean	2 weeks to 2 months
1,500	Over 210° F	Clean	Daily to weekly
Any	32° F – 150° F	Dirty	Weekly to monthly
Any	Over 150° F	Dirty	Daily to 2 weeks
Any	Any Temp.	Very Dirty	Daily to weekly
Any	Any Temp.	Extremely Dirty	Daily to weekly

NOTE:

Over lubrication is a major cause of bearing failures. Please relubricate conservatively when unsure of bearing requirements. When selecting a bearing lubricant, IPTCI suggests any lithium-based NLGI #2 grease. For operating temperatures higher than 210° F, please consult IPTCI.

*Please refer to the instruction manual for full installation instructions.

**Refer to the instruction manual for full lubrication guidelines.

Note: For Radial Loads, please see CL 200 Series insert (page 14).



SOLVE »
INDUSTRIAL MOTION GROUP

IPTCI

IPTCI is part of Solve Industrial Motion Group, an industry-leading manufacturer and supplier of industrial-grade bearings and power transmission components.

800-328-8153 • IPTCIsales@SolveIndustrial.com

©2024 IPTCI. All Rights Reserved.

